

# 2014 - 2016 Corvette: Service Bulletin: #16-NA-250: Slow Cranking, Dead Battery and/or No Start

## #16-NA-250: Slow Cranking, Dead Battery and/or No Start - (Aug 8, 2016)

**Subject:** Slow Cranking, Dead Battery and/or  
No Start

---

Brand:	Model:	Model Year:		VIN:		Engine:	Transmission:
		from	to	from	to		
Chevrolet	Corvette	2014	2016	-	-	LT1, LT4	-

***Involved Region or Country***

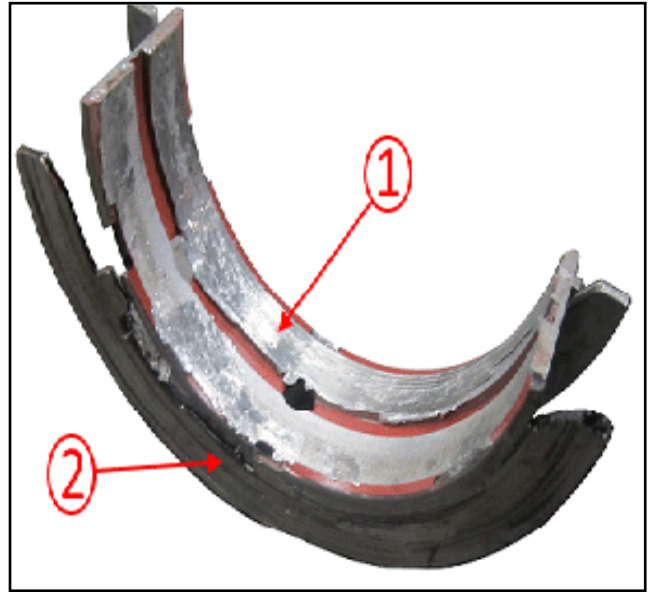
North America and N.A. Export  
Regions

***Condition***

The customer may comment on the  
following conditions:

- Slow engine cranking
- Dead battery
- No start

**Cause**



This may be caused by excessive pressure to the engine crankshaft thrust bearing (1), by forward pressure from a mis-aligned driveline support assembly.

### **Correction**

If the driveline support assembly has been removed from a previous vehicle repair, it is required that the propeller shaft hub clamp (Automatic Transmission) or input shaft front bearing (Manual Transmission) be realigned. Follow the procedures outlined in SI.

Failure to properly align the driveline support assembly may result in warranty claims being debited for improper workmanship.

Online URL:

<https://www.corvetteactioncenter.com/tech/knowledgebase/article/2014-2016-corvette-service-bulletin-16-na-250-slow-cranking-dead-battery-and-or-no->

[start-1295.html](#)