

# 1990 Corvette: Service Manual Update: Sec. 6E3 Driveability and Emissions Revised Code 34 Chart

---

**Subject:** SERV MANUAL UPDATE-SEC.6E3 DRIVEABILITY AND EMISSIONS

**Model and Year:** 1990 CORVETTE WITH 5.7L L98 (VIN CODE 8) ENGINE

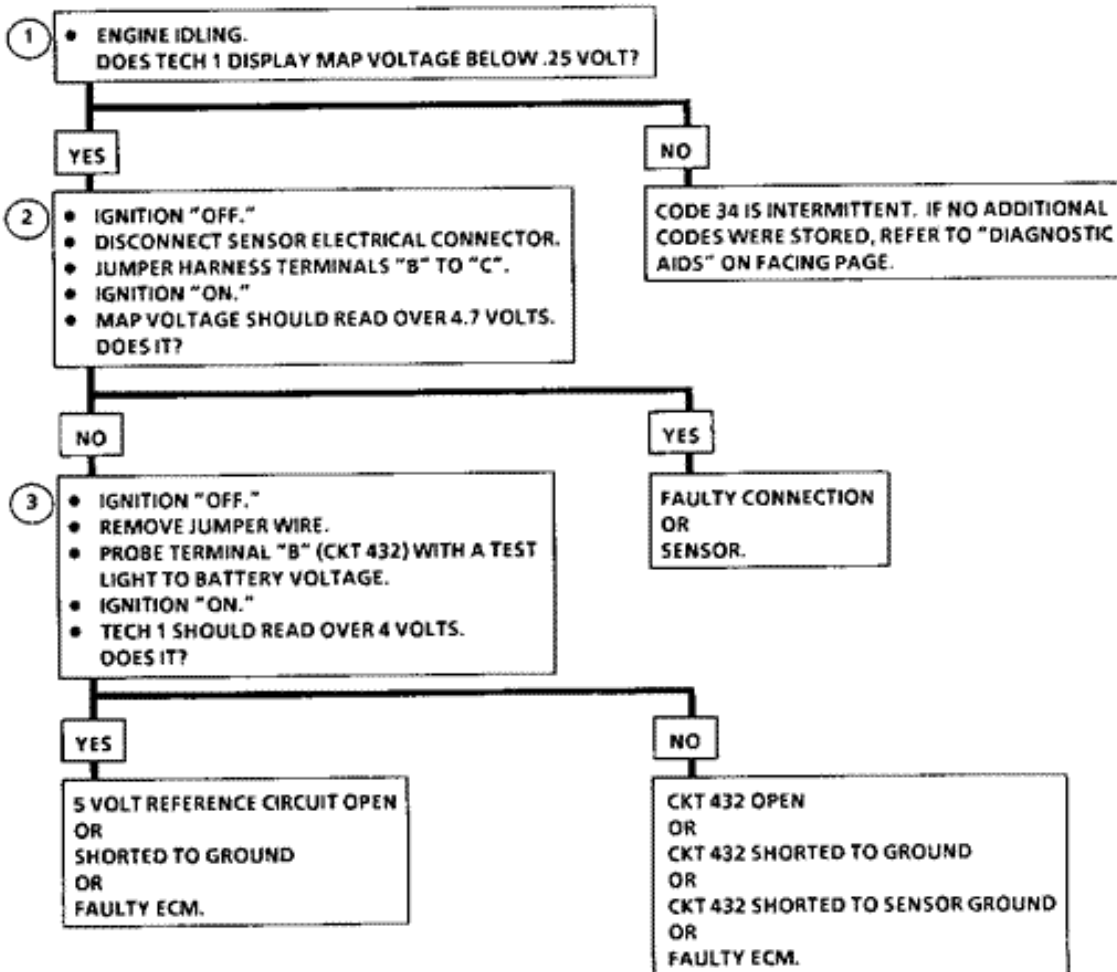
**Source:** Chevrolet Service Bulletin

**Bulletin Number:** 90-350-6E - (09/13/1990)

The attached Code 34 diagnostic chart replaces the diagnostic chart found in DRIVEABILITY AND EMISSIONS (SECTION 6E3) on page 6E3-A-47 of the 1990 "Y" 5.7L L98 (VIN 8) Corvette Service Manual.

## CODE 34

### MANIFOLD ABSOLUTE PRESSURE (MAP) SENSOR CIRCUIT (SIGNAL VOLTAGE LOW - HIGH VACUUM) 5.7L (VIN 8) "Y" CARLINE (PORT)



General Motors bulletins are intended for use by professional technicians, not a "do-it-yourselfer". They are written to inform those technicians of conditions that may occur on some vehicles, or to provide information that

could assist in the proper service of a vehicle. Properly trained technicians have the equipment, tools, safety instructions and know-how to do a job properly and safely. If a condition is described, do not assume that the bulletin applies to your vehicle, or that your vehicle will have that condition. See a General Motors dealer servicing your brand of General Motors vehicle for information on whether your vehicle may benefit from the information.

**© Copyright General Motors Corporation. All Rights Reserved**

Online URL:

<https://www.corvetteactioncenter.com/tech/knowledgebase/article/1990-corvette-service-manual-update-sec-6e3-driveability-and-emissions-revised-code-34-chart-529.html>