

1988 -1996 Corvette : Visual Differences Between Production Brakes

1988 - 1996 Corvette Caliper Pictorial

The following pictures and information are used here with permission by Jeff Kopp, Wholesale Parts Manager, Superior Chevrolet, Merriam, KS.

Below are some pictures and descriptions that show some of the differences between the later ('88-'96) C4 calipers.

[Click on any image to see a larger version.](#)

Pics of the JL9 (12") caliper:





Pics of the J55 (13" Non-GS) caliper:





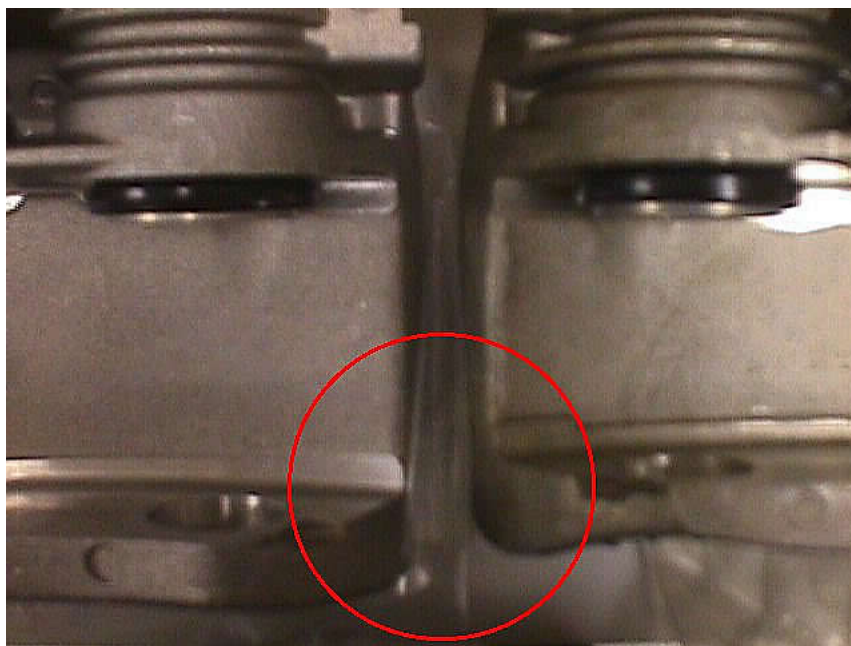
Pics of the GS (13") caliper:





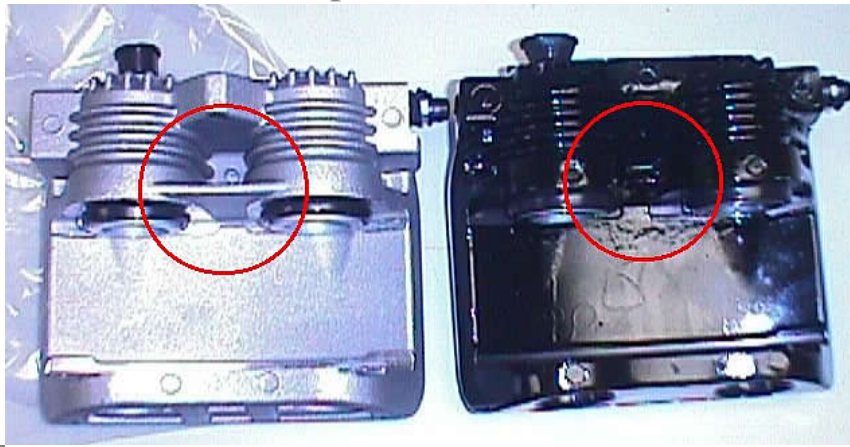
Noted differences between JL9 (12") and J55 (13") Caliper:

As you can see below, the major difference between the J55/GS and the JL9 caliper is the width of the throat where the rotor resides. The J55/GS caliper is the one on the left and is about .5" wider than the JL9.



Noted differences between J55 and GS Caliper:

It's very hard to tell in this pic but you may notice that the rib running between the piston cylinders is deeper on the J55 caliper than the GS caliper however the GS calipers rib is a bit wider.



There are a couple of differences noticeable in this pic. First, the ribs on the top of the calipers. The J55 has more ribs but they are thinner than the ribs on the GS. Second, notice that the triangle shaped leg on the J55 caliper is not present on the GS.



Main difference here is that the GS caliper is smoothed with the "CORVETTE" logo unlike the plain, ribbed J55 caliper.



Another view of the top of the calipers showing the difference in ribs.



Online URL:

<https://www.corvetteactioncenter.com/tech/knowledgebase/article/1988-1996-corvette-visual-differences-between-production-brakes-640.html>