

# 1998 Corvette: Service News: Corvette Convertible Top Adjustment

---

**Subject:** Corvette Convertible Top Adjustment

**Model and Year:** 1998 Corvette

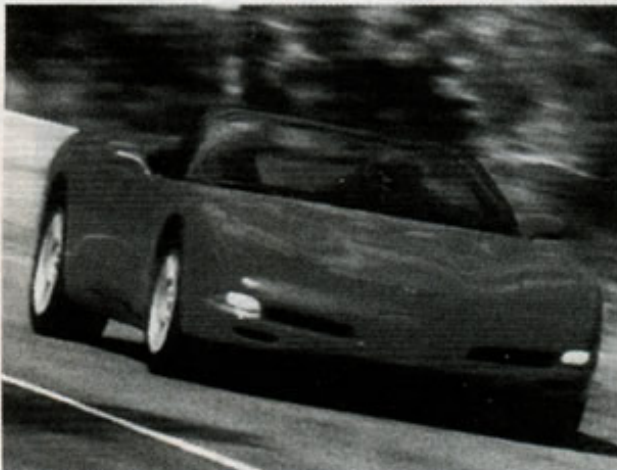
**Source:** Chevrolet Pro Service News

**Page Number:** 9 - 13

**Date:** November 1997 - Volume 6, Issue #11

# Corvette Convertible Top Adjustment

There's nothing quite like the feeling of being on an open road in a convertible — especially a Corvette convertible. Power in your hands, sunshine on your shoulders and wind in your hair.



*1998 Corvette Convertible*

In order for 1998 Corvette convertible owners to enjoy these benefits, you not only need to be familiar with the vehicle's new features, but there are several adjustments that you may need to know as well.

To learn more about the Corvette convertible, we recently visited Dura Convertible Systems in Adrian, Michigan. First, we'll discuss the operation of the convertible's top.

In order to release the tonneau, press the release button located on the underside of the tonneau cover directly behind the driver's seat.



*Tonneau release located on underside of cover*

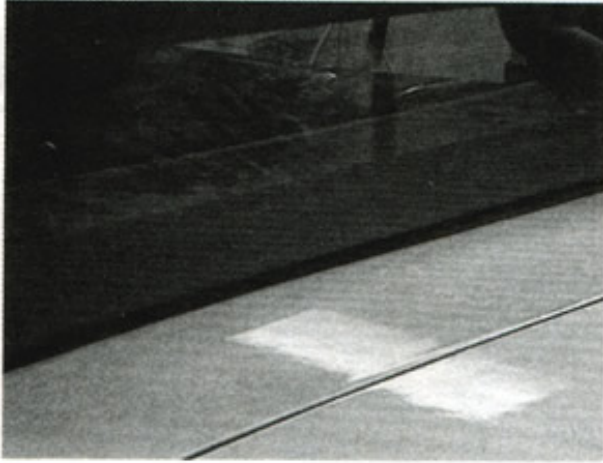
Now, open the tonneau and carefully lift out the convertible top. Once the top has been raised out of the stowage compartment, fold the tonneau back down.



*Top being raised from stowage compartment*

As you stretch the top toward the windshield frame, the back of the top should become snug with the tonneau cover.

## Corvette Convertible Top Adjustment



*Rear bow will become snug with tonneau cover.*

Now, simply latch the top to the windshield header, using the levers located on the front bow of the roof.

A convertible's top stack is a fairly complex mechanism, consisting of numerous bows, rails, links and pivots. For the most part, these components are designed to operate without the need for adjustment.



*The Corvette convertible's top stack*

Although the Corvette convertible's top is fairly easy to use, there are still a few adjustments that must be performed properly and accurately. Also, we want to point out where to make these various adjustments and explain what they do.

Let's begin with adjusting the number 5 bow for height. First, place the convertible top with the number 1 and number 5 bows in the up position.



*Numbers 1 and 5 bows in upward position*

Locate the adjustment screw on the underside of the number 5 bow — at the lower pressure link.



*Adjustment screw for number 5 bow*

Now, loosen the jam nut on the adjusting screw. Rotate the screw counterclockwise if an upward movement is needed for the number 5 bow. Rotate clockwise if downward movement is required.

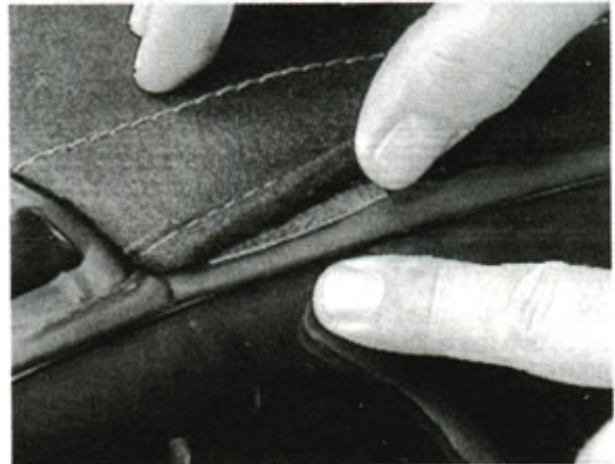


*Rotate screw for desired movement.*

You may need to repeat this procedure on the opposite side in order to balance the top's movement. Also, repeat the entire procedure until the desired number 5 bow position is achieved.

The next procedure calls for adjusting the front and center rail seal planes.

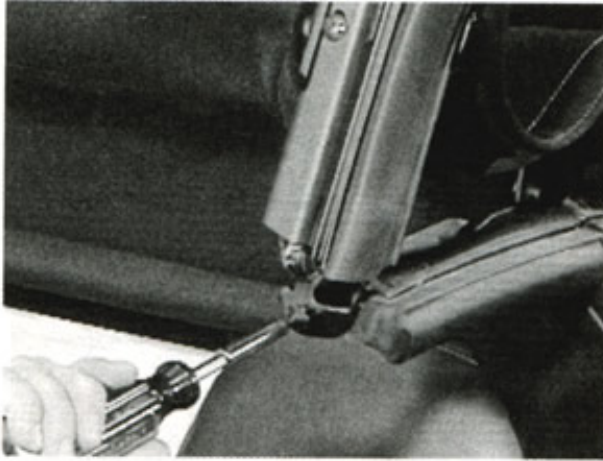
The seal planes should be parallel to the door window.



*Front and center seal planes*

If not, using a Torx® screwdriver, turn the adjusting screw, located in the center rail, counterclockwise for downward movement and clockwise for upward movement.

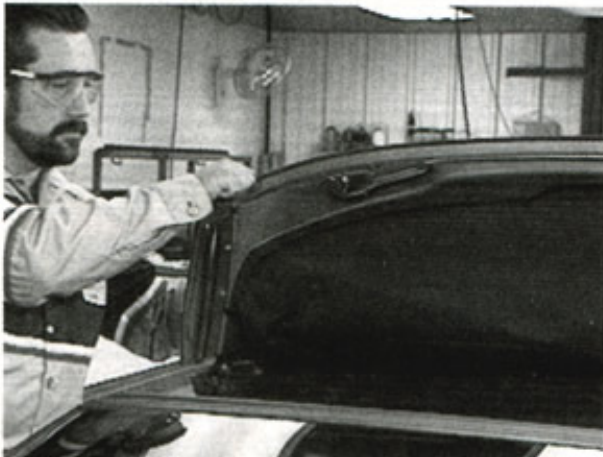
## Corvette Convertible Top Adjustment



*Turn adjusting screw as appropriate.*

Again, adjustments can be made to both sides of the convertible top.

Another adjustment that can be made allows you to position the right latch assembly, left or right as required. First, make sure the top is not attached to the windshield header. Remove the appearance cap from the latch handle.



*Unlatch top from the windshield.*

Now, rotate the latch until you obtain driver access for the bolt. Loosen, but do not remove, the two bolts that attach the latch to the number 1 bow.



*Loosen two bolts on latch.*

You can now adjust the latch left or right as required.



*Adjust latch left or right.*

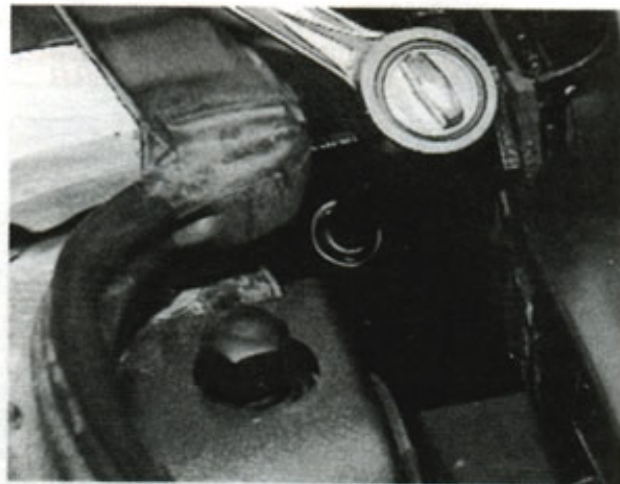
Next, re-attach the top to the windshield header. Finally, re-torque the bolts and replace the appearance cap.

The final adjustment that can be made on the convertible top is the fore-aft adjustment on the rear rail seal plane. First of all, make sure the convertible top is placed in the stowed position, leaving the tonneau panel open. Next, locate the adjustment screw at the rear rail pivot bracket. You will have to remove the seat belt in order to remove the panel for access to the jam nut.



*Locate adjustment screw on rear rail.*

Loosen the jam nut and rotate the screw clockwise to move the rear rail seal plane forward, and counterclockwise to move it rearward.



*Rotate screw for desired movement.*

Once the seal is in the proper position, tighten the jam nut.

Although there are not many adjustments that can be made on the C5's convertible top, each and every one is still very important. Follow these procedures very carefully, and for further information please consult your service manual.



Online URL:

<https://www.corvetteactioncenter.com/tech/knowledgebase/article/1998-corvette-service-news-corvette-convertible-top-adjustment-888.html>